



SURF

Strategic setting of ORI

Eileen Waegemaekers

9 February 2026

| Current research landscape

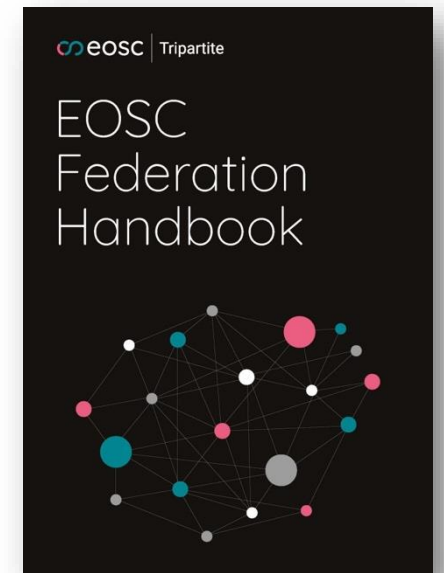
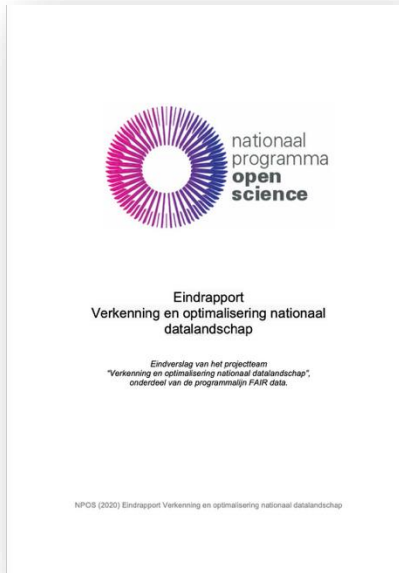
- **“The Netherlands has a rich, but fragmented, confusing data landscape.** This concerns both data services and the development and dissemination of knowledge about the care of research data. This creates risks of overlap, inefficiency and missing opportunities for connection and innovation.”
- Final report Exploration and optimization of national data landscape (NPOS, 2020)



QUESTION

How to orchestrate a national infrastructure within this rich but fragmented landscape?

| Commons Approach



“Form a national network of all data service providers and repositories (as '**National Open Science Cloud**' or '**Commons**' or 'Network') with the aim of greater coordination, overview and synergy.”

“**Digital commons** “...provide a structure in which public values, democratic decision-making and (technological) sovereignty are placed centrally.”

| Commons definition

- The term "commons" refers to resources that are shared and accessible to all members of a community. These resources can be natural, such as air and water, or cultural, like knowledge and traditions. The concept emphasizes collective management and equitable access.

The commons



The tragedy of the commons

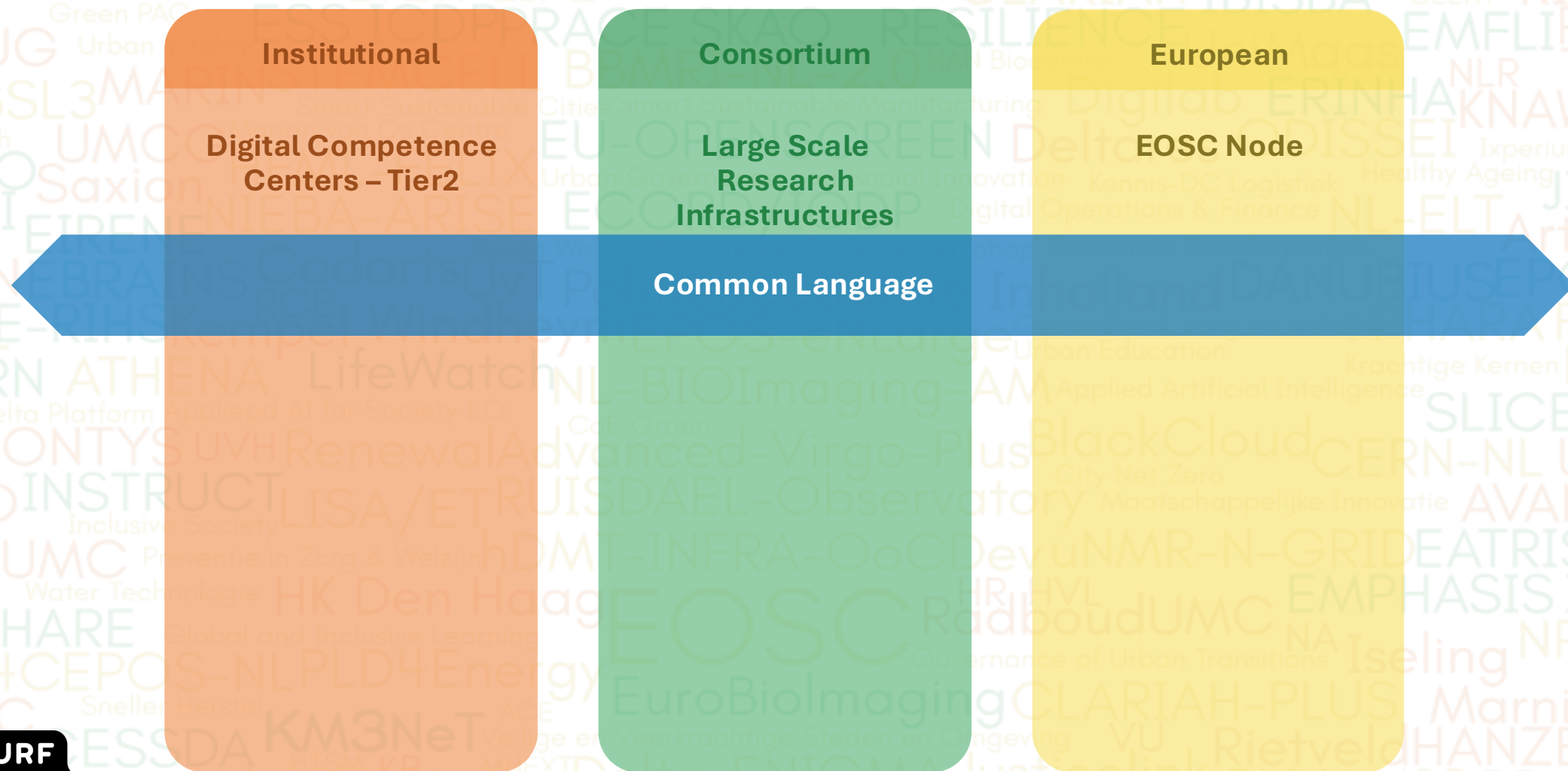


The enclosure of the commons



- **Shared Resources:** Commons include both natural and cultural assets that belong to a community.
- **Community Management:** Resources are governed by the community rather than by the state or market forces. This involves informal norms and values that guide usage.
- **Sustainability:** The management of commons aims to preserve resources for future generations, ensuring they remain available for all.

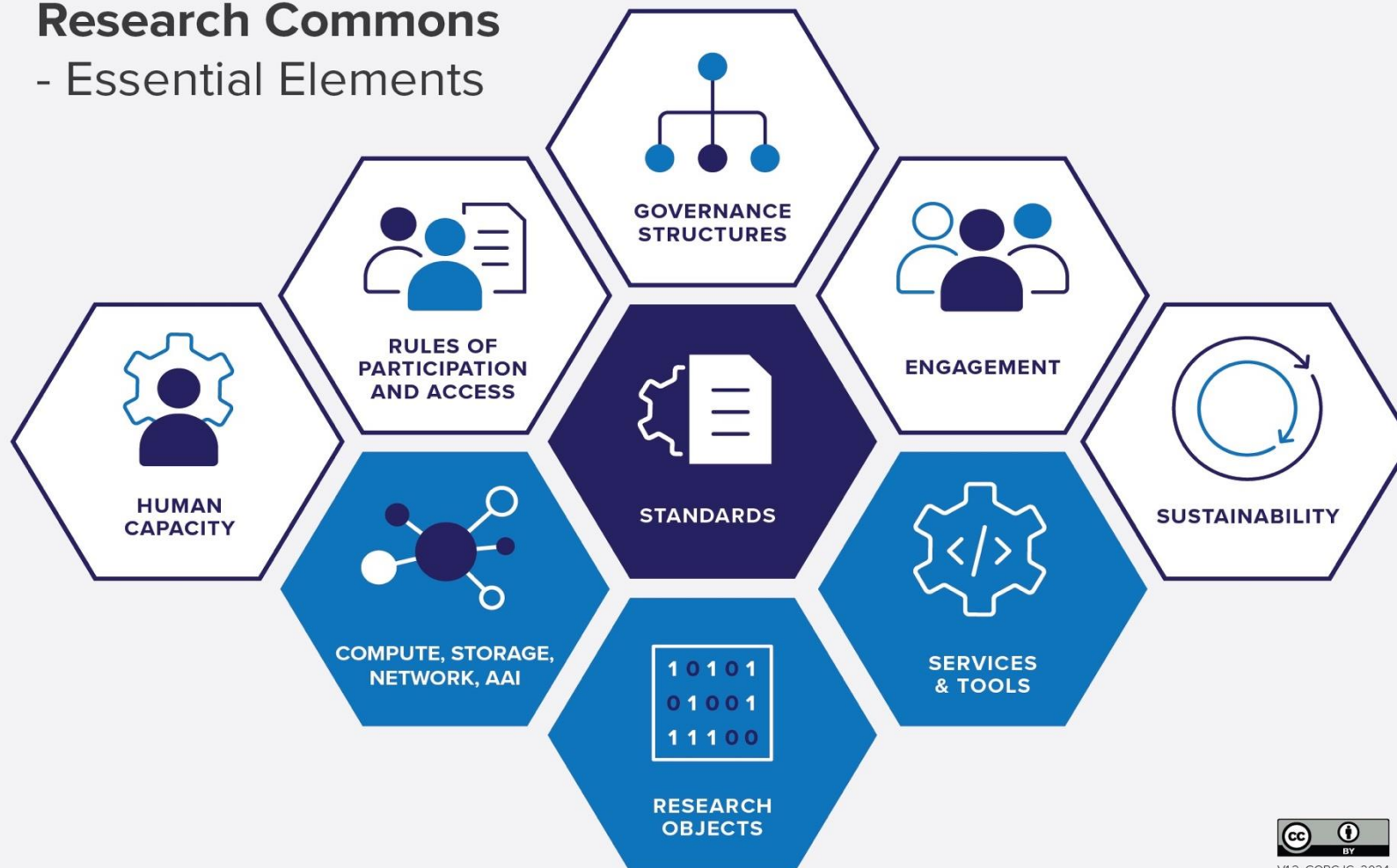
| How to orchestrate a national infrastructure

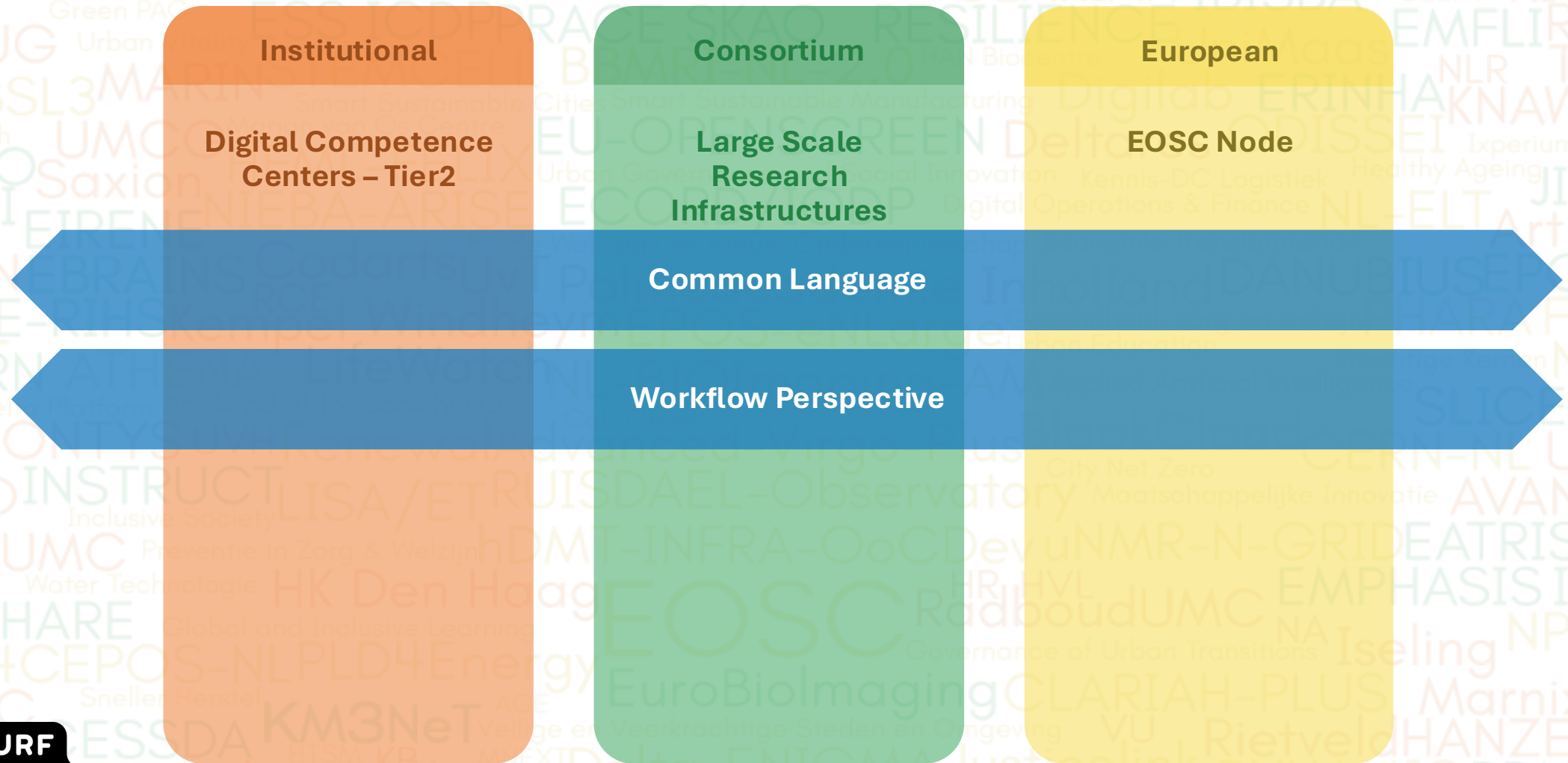


SURF

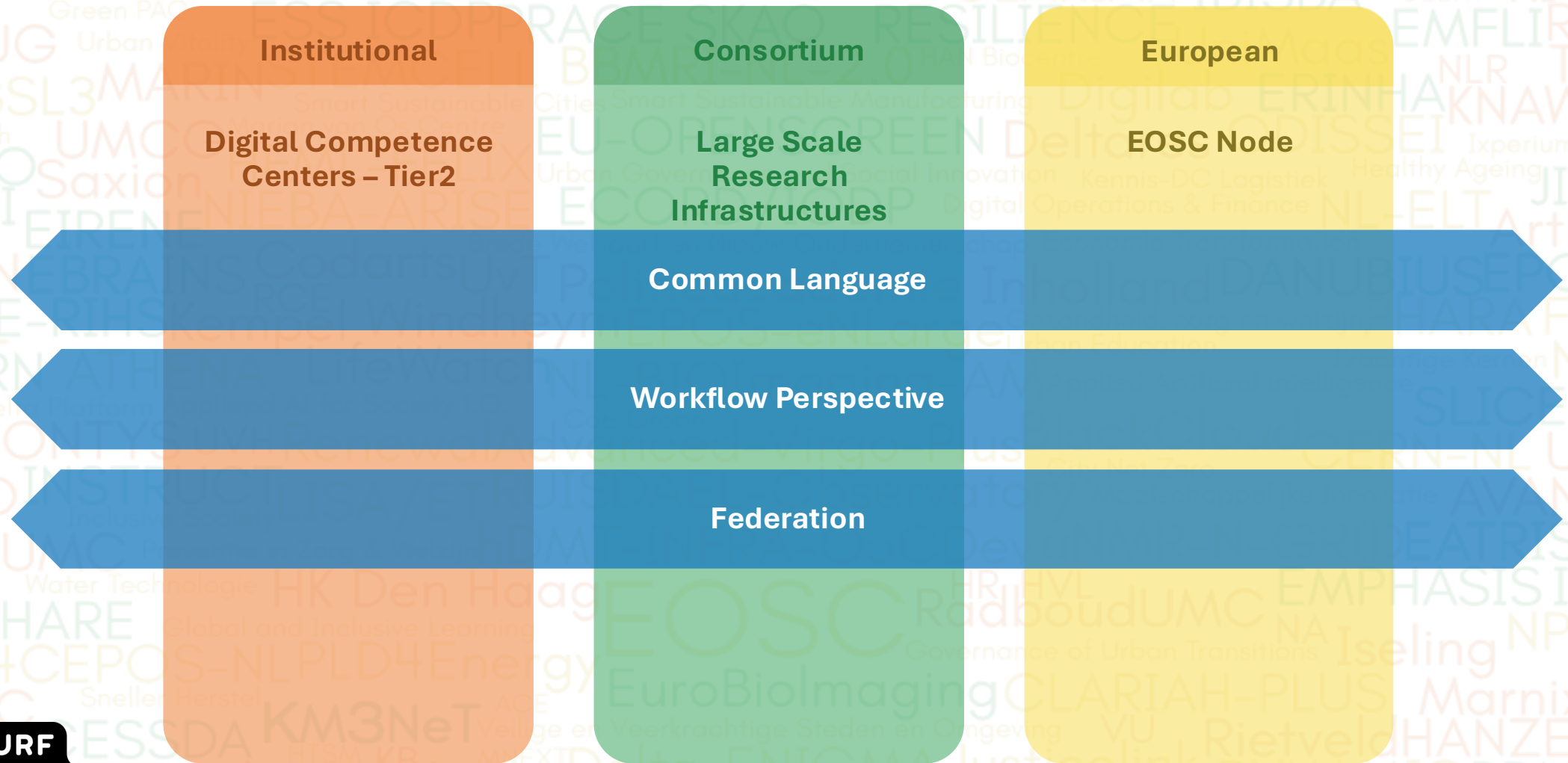
| How to orchestrate a national infrastructure

Global Open Research Commons - Essential Elements



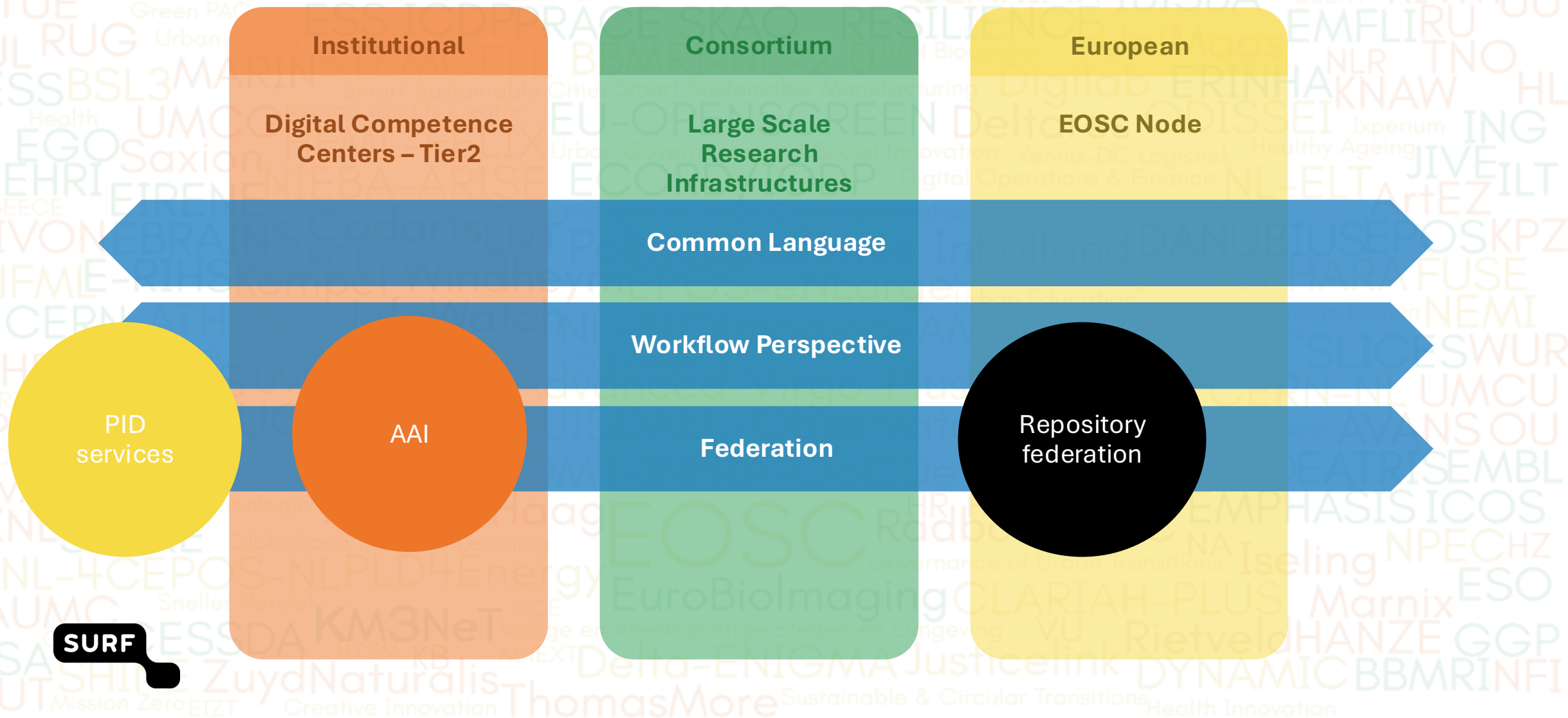


| How to orchestrate a national infrastructure

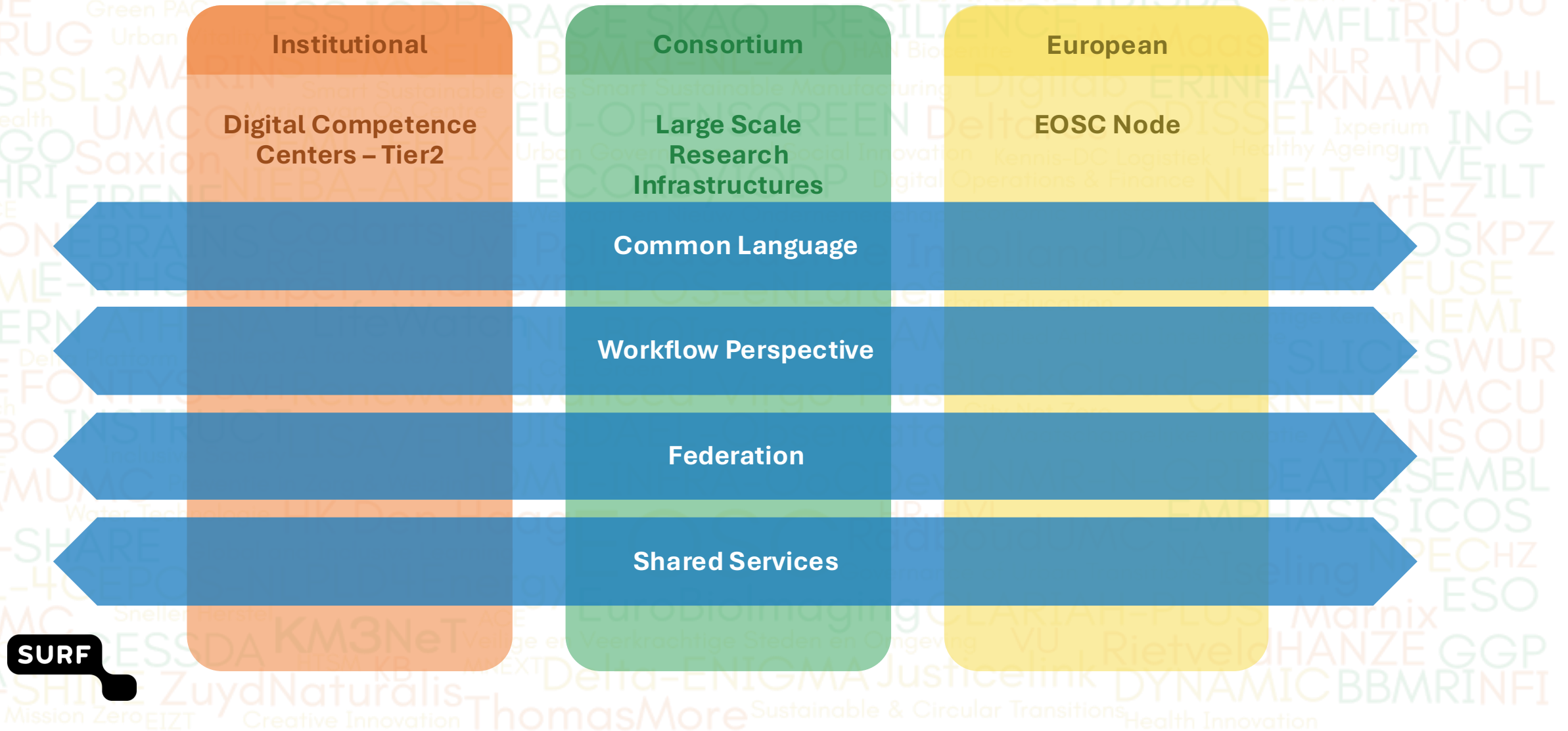


SURF

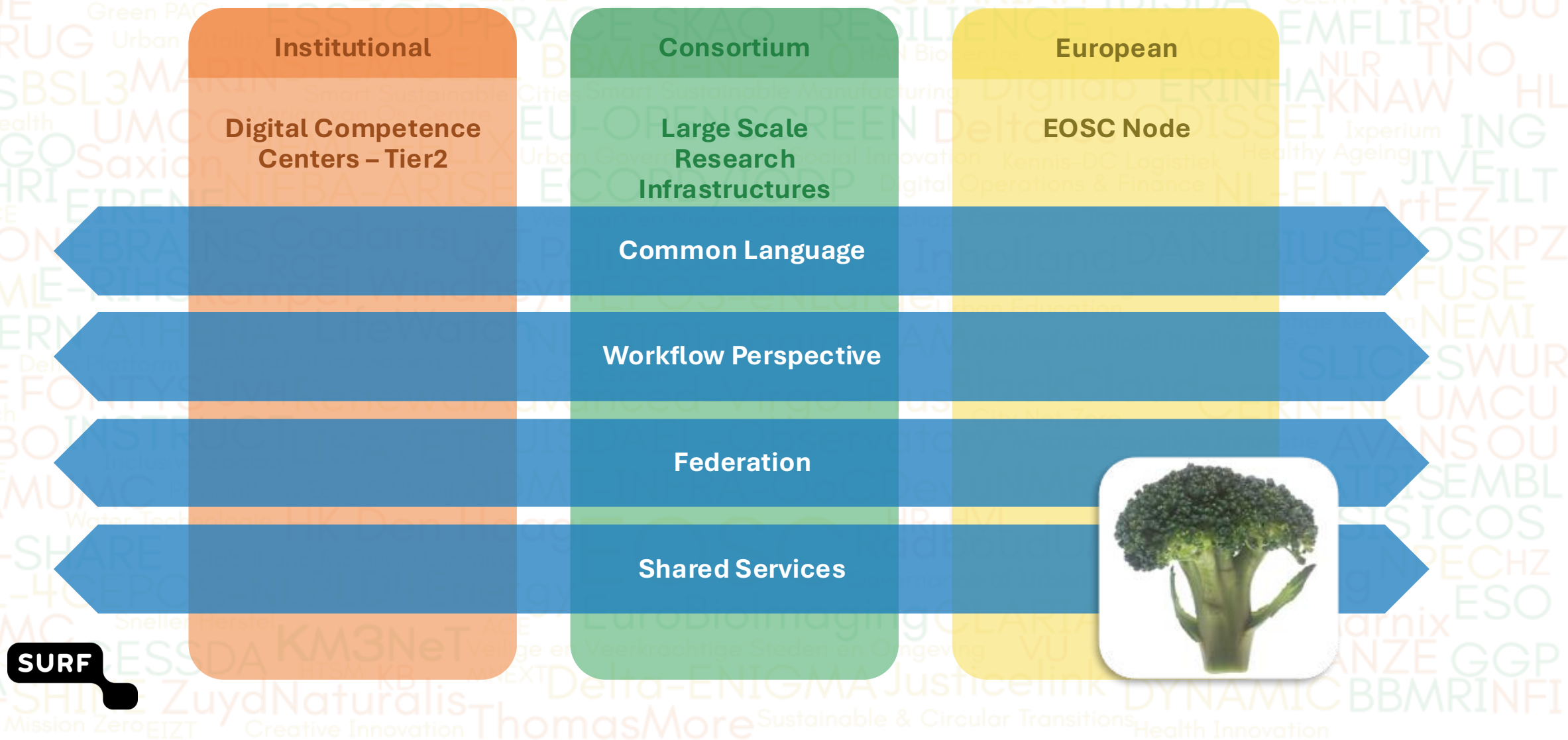
| How to orchestrate a national infrastructure



| How to orchestrate a national infrastructure



| How to orchestrate a national infrastructure



OBJECTIVE



**Transform the closed
research information
infrastructure to an ORI
commons**

COLLECTIVE ACTION



We need:

- 1. Clarity on who does what**
- 2. Agreement on who maintains what**
- 3. Commitment to collective value over local optimization**



AWeith, CC BY-SA 4.0 <https://creativecommons.org/licenses/by-sa/4.0>
via Wikimedia Commons

